

MIESZKANIE NR:

F3_15

POWIERZCHNIA UŻYTKOWA:

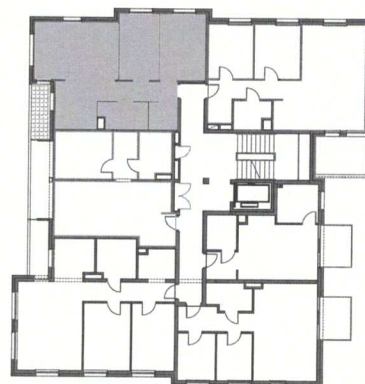
67,00 m²

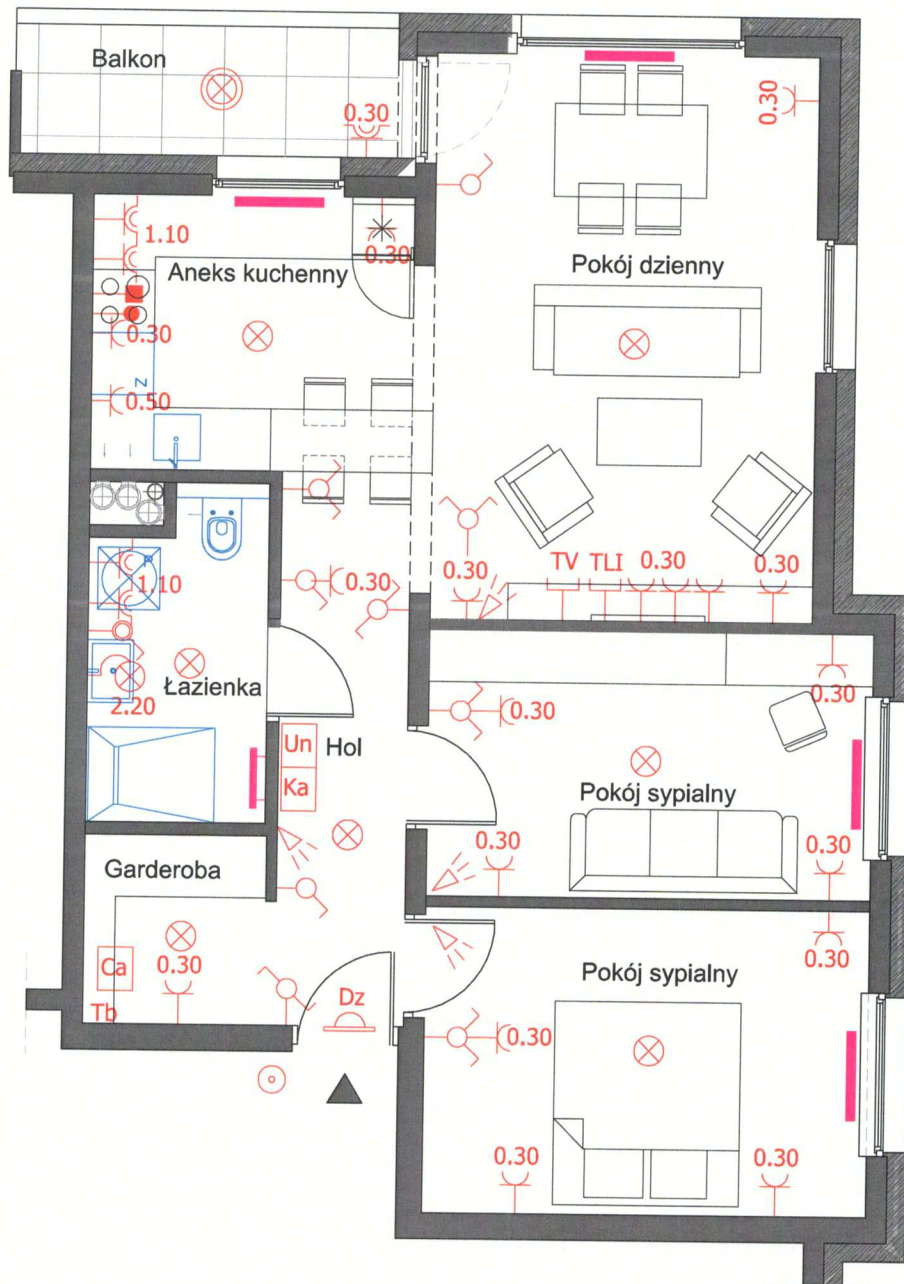
POZIOM:

2 PIĘTRO

POWIERZCHNIA BALKONU:















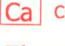









4,80 m²



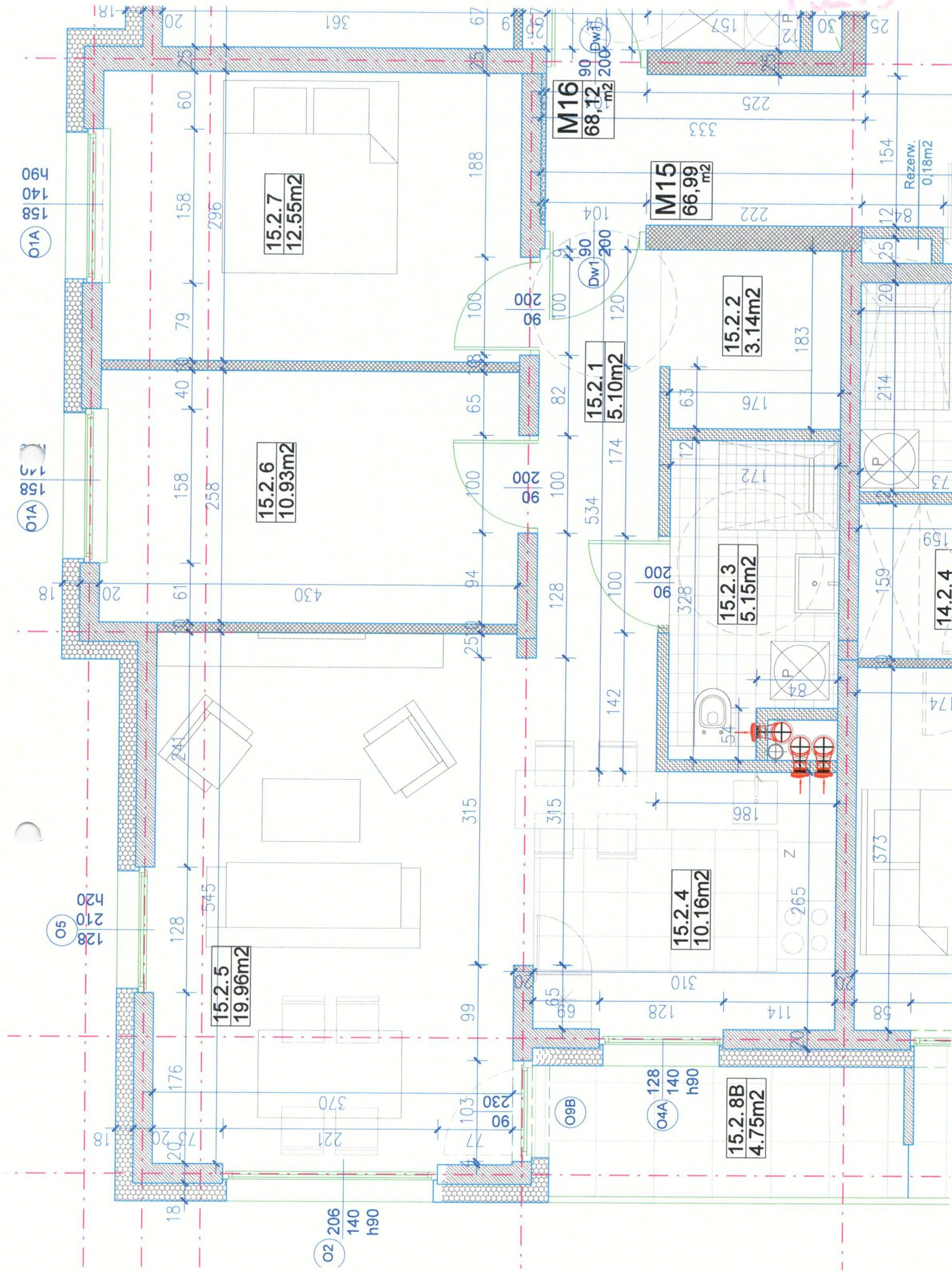


LEGENDA - INSTALACJE:

MIESZKANIE NR: F3_15

	ŁĄCZNIK KŁATKOWY		0.30 GNIAZDO IP 20		CZUJKA RUCHU, WYPUST INSTAL. ALARM.		ZLEWOZMYWAK
	ŁĄCZNIK POJEDYNCZY		1.10 GNIAZDO IP 44		Un UNIFON		UMYWALKA
	ŁĄCZNIK PODWÓJNY		TV GNIAZDO TELEWIZYJNE		Ka KLAWIATURA ALARMU		PRALKA
	ŁĄCZNIK POJED. IP 44		TLI GNIAZDO TELEINFORM.		Ca CENTRALA ALARMOWA		MISKA WC
	PUNKT ŚWIETLNY		230V WYPUST ELEKTRYCZNY ZASIL. OKAPU		Tb TABLICA ELEKTRYCZNA		BRODZIK
	KINKIETIET - WYPUST		400V WYPUST ELEKTRYCZNY ZASIL. PŁYTY INDUKC.				GRZEJNIK PŁYTOWY CO.
							GRZEJ. DRABINKOWY CO.

F.2.15



02 206
140
h90

05 128
210
h20

01A 158
140
158
h90

04A 128
140
h90

09B

Rezerw.
0,18m²